

## Training Question: April 2021 Meeting

### Question One

What data is evaluated by the ERSEA Committee?

**Answer:** Eligibility Data  
Recruitment Data  
Selection Data  
Enrollment Data  
Attendance Data

### Question Two

What is learned from the ERSEA Committee Meeting?

**Answer:** Is the program serving the children with the greatest need:

- ✓ Analyzing Data from Community Assessment
- ✓ Updating the Selection Criteria
- ✓ Analyzing attendance and enrollment

### Key words:

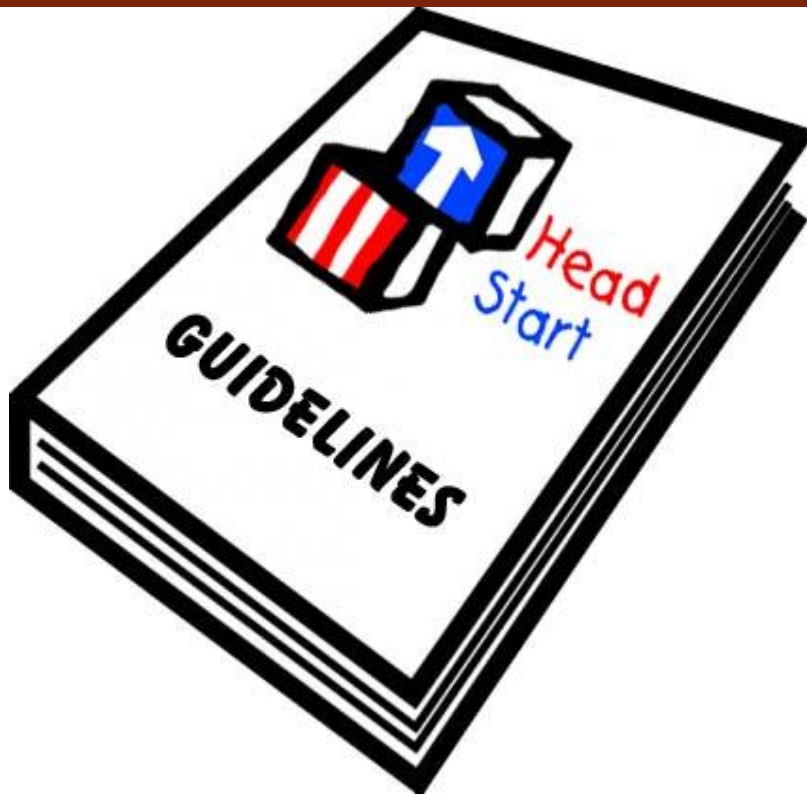
*ERSEA – See Fact Sheet*



# FACTS

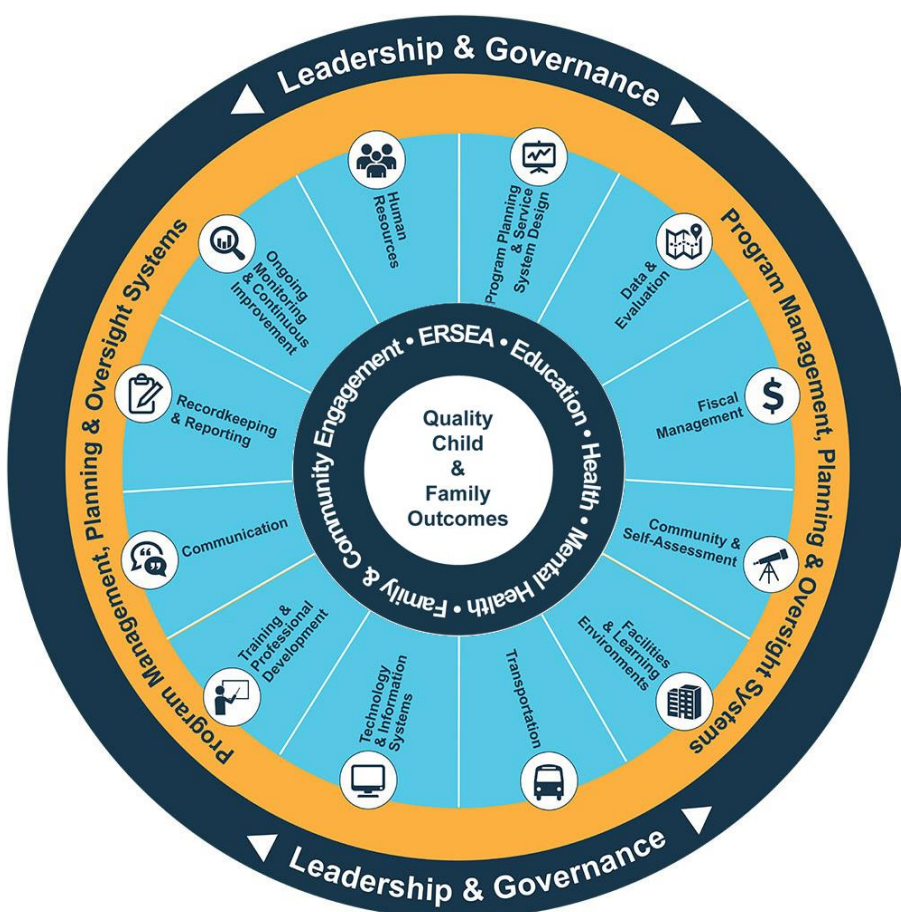
## About Head Start Fiscal Oversight

### WHAT IS ERSEA?



Eligibility, Recruitment, Selection, Enrollment, and Attendance (ERSEA) tasks are some of the most important work performed by Head Start programs. ERSEA governs how programs determine eligibility, enroll children, and track attendance. Discover resources to help programs assess the needs of their communities and recruit the children and families most in need. Explore materials and tools to help programs market their services and develop and implement selection criteria. Also, find resources to identify community partners and better address community needs.

### WHAT ARE OTHER HEAD START ERSEA Funct?



#### 1302.14 Selection process.

(a) *Selection criteria.* (1) A program must annually establish selection criteria that weigh the prioritization of selection of [participants](#), based on community needs identified in the community needs assessment as described in §[1302.11](#)(b), and including family [income](#), whether the child is homeless, whether the child is in [foster care](#), the child's age, whether the child is eligible for special education and related services, or early intervention services, as appropriate, as determined under the Individuals with Disabilities Education Act (IDEA) (20 U.S.C. 1400 *et seq.*) and, other relevant family or child risk factors.