



This data reflects demographic information on the students who participated in this assessment session.

Total Students Participating:	429
--------------------------------------	------------

Students Age

Three Year Old :	41%	Four Year Old:	59%
-------------------------	------------	-----------------------	------------

Gender

Male:	44%	Female:	56%
--------------	------------	----------------	------------

Race

White: 30%	Black/African American: 53%	Two or more: 9%
	Other: 8%	Not Specified: 0%

Language*

English: 95%	Spanish 5%	Unknown: 0%
-------------------------------	-----------------------------	------------------------------

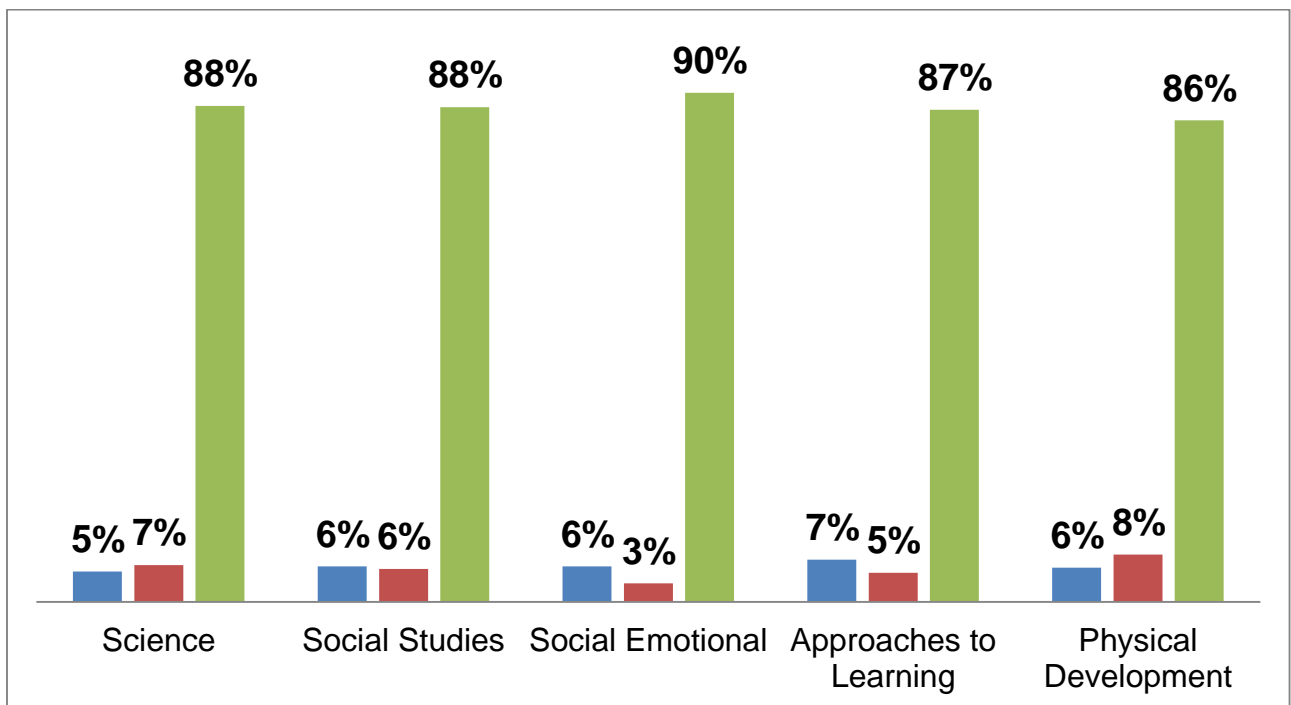
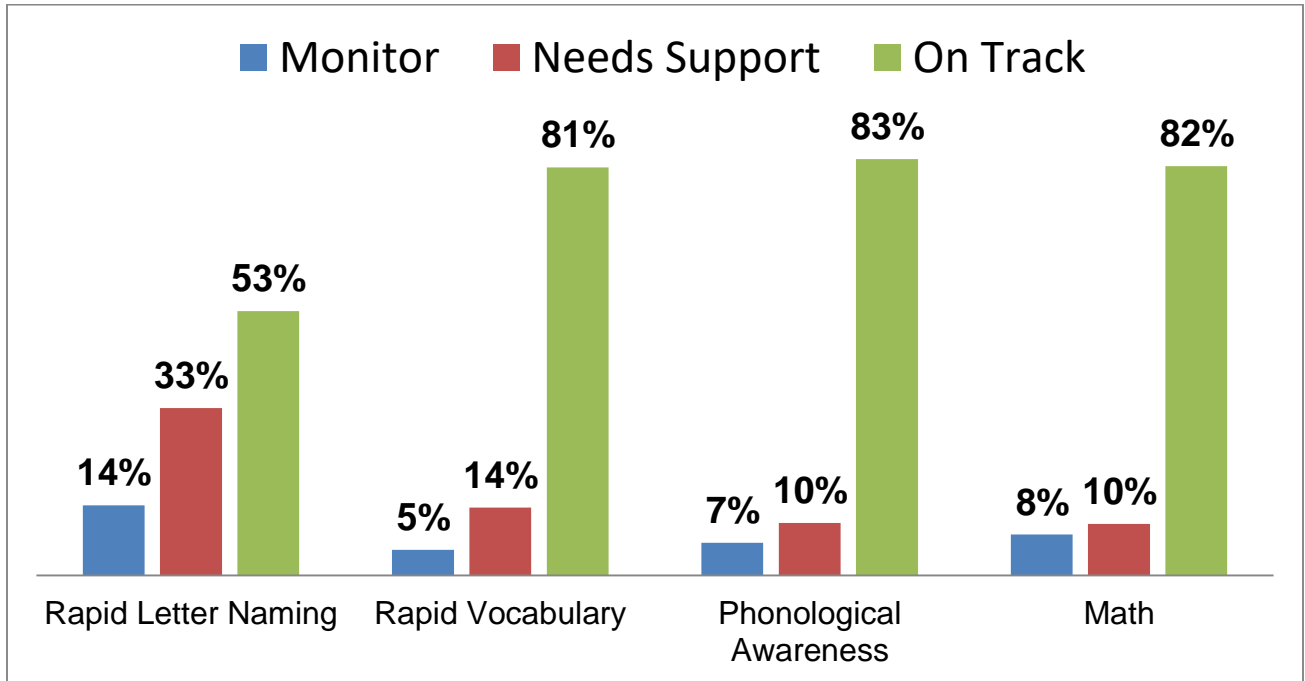
Disabilities

Yes:	7%	No:	93%
-------------	-----------	------------	------------

CSNT Head Start

CIRCLE Assessment 2021-2022

Wave 2 Program Report



CSNT Head Start – CIRCLE Assessment

On-Track Comparison Data 2021-2022

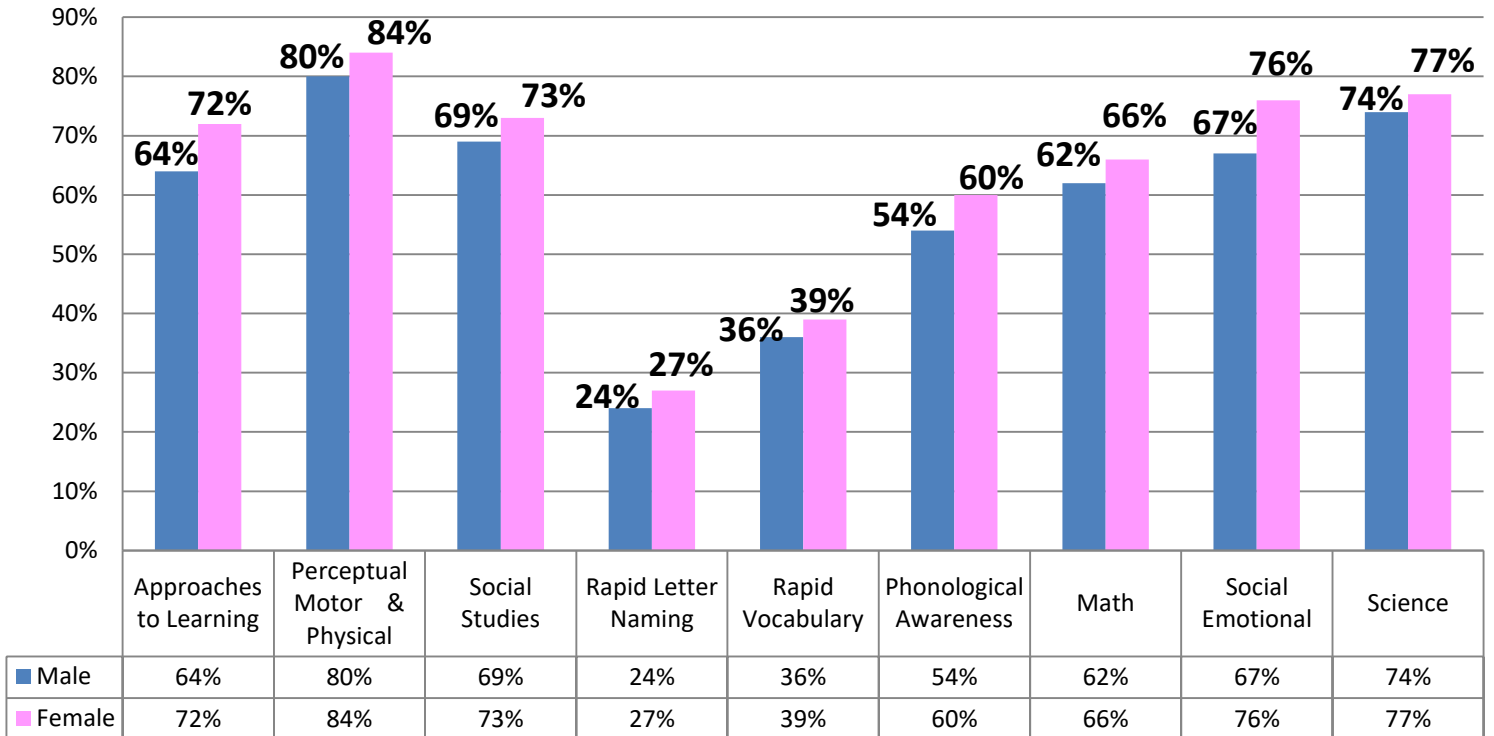
	Wave 1	Wave 2
Rapid Letter Naming	32%	53%
Rapid Vocabulary	65%	81%
Phonological Awareness	83%	83%
Math	81%	82%
Science	88%	88%
Social Studies	92%	88%
Social Emotional	97%	90%
Approaches to Learning	91%	87%
Physical Development	88%	86%
Total Students Tested	418	429

*Wave 2 data may indicate an anomaly in database system.

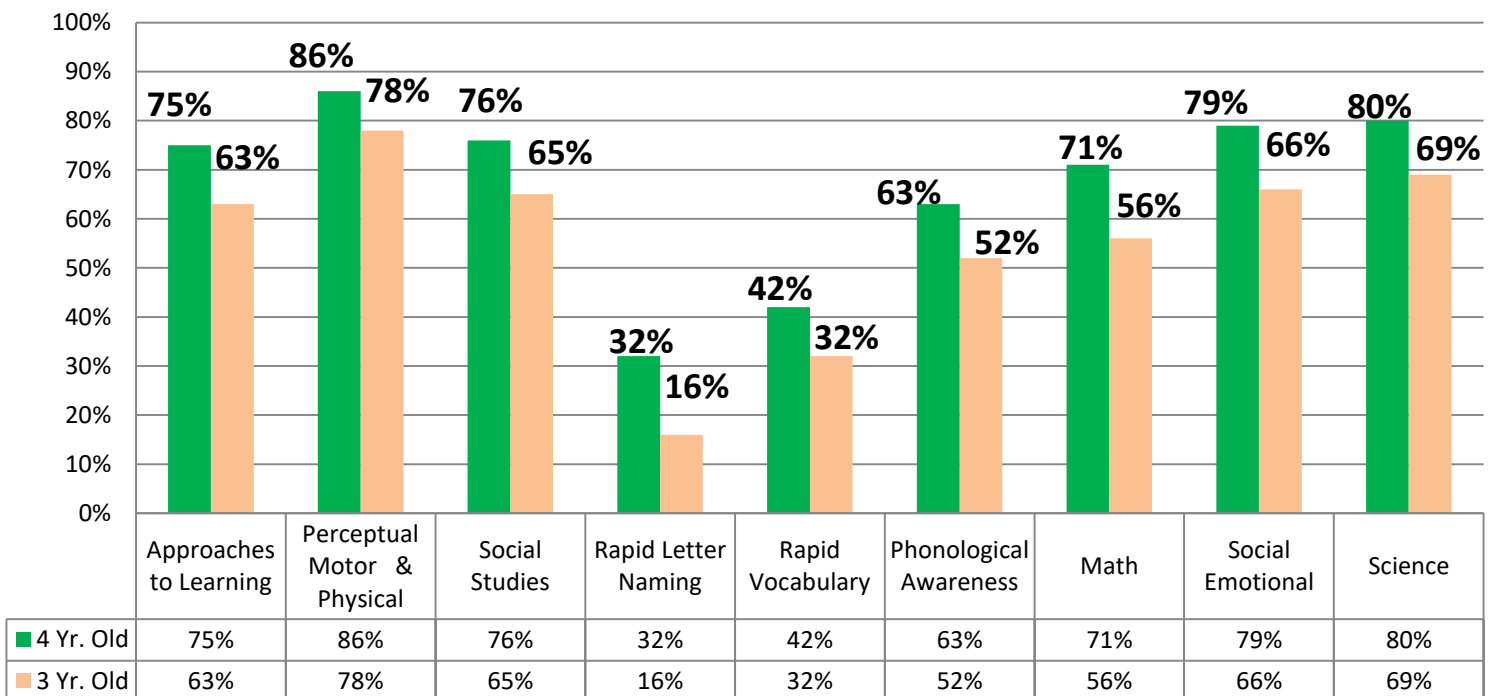
CSNT Head Start – CIRCLE Assessment

Wave 2 Comparison Data 2021-2022

Male / Female Comparison

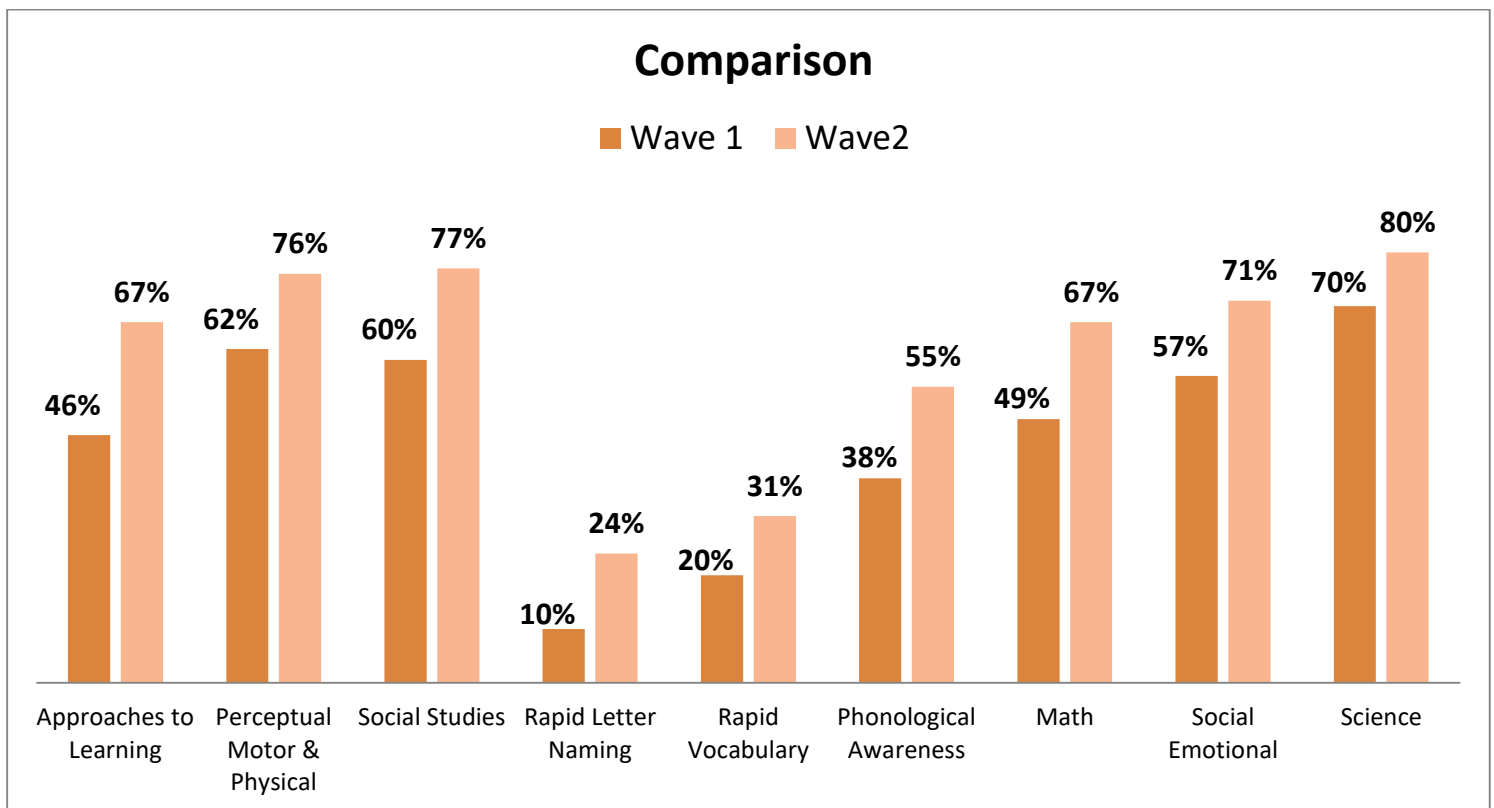
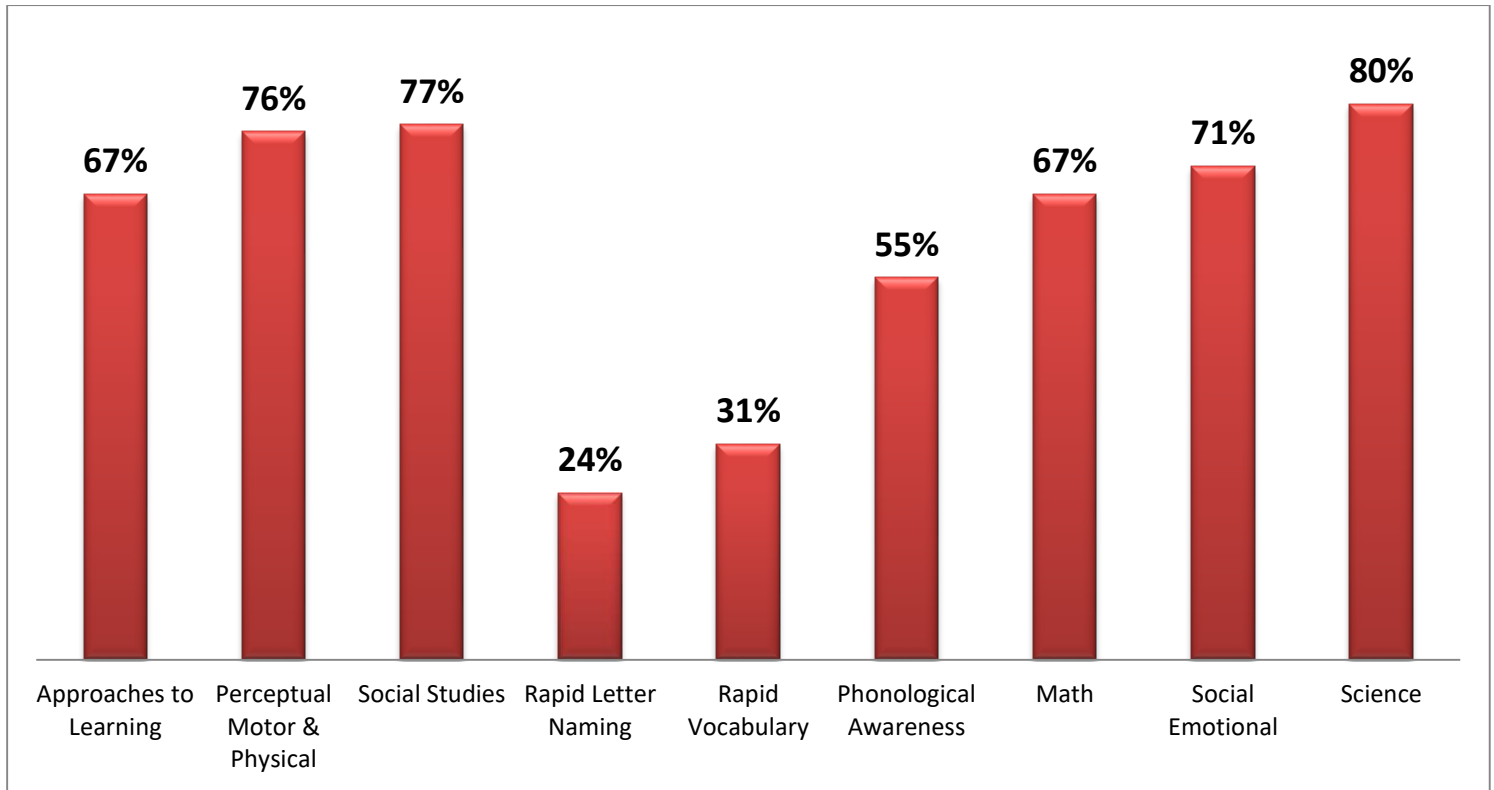


Age Comparison



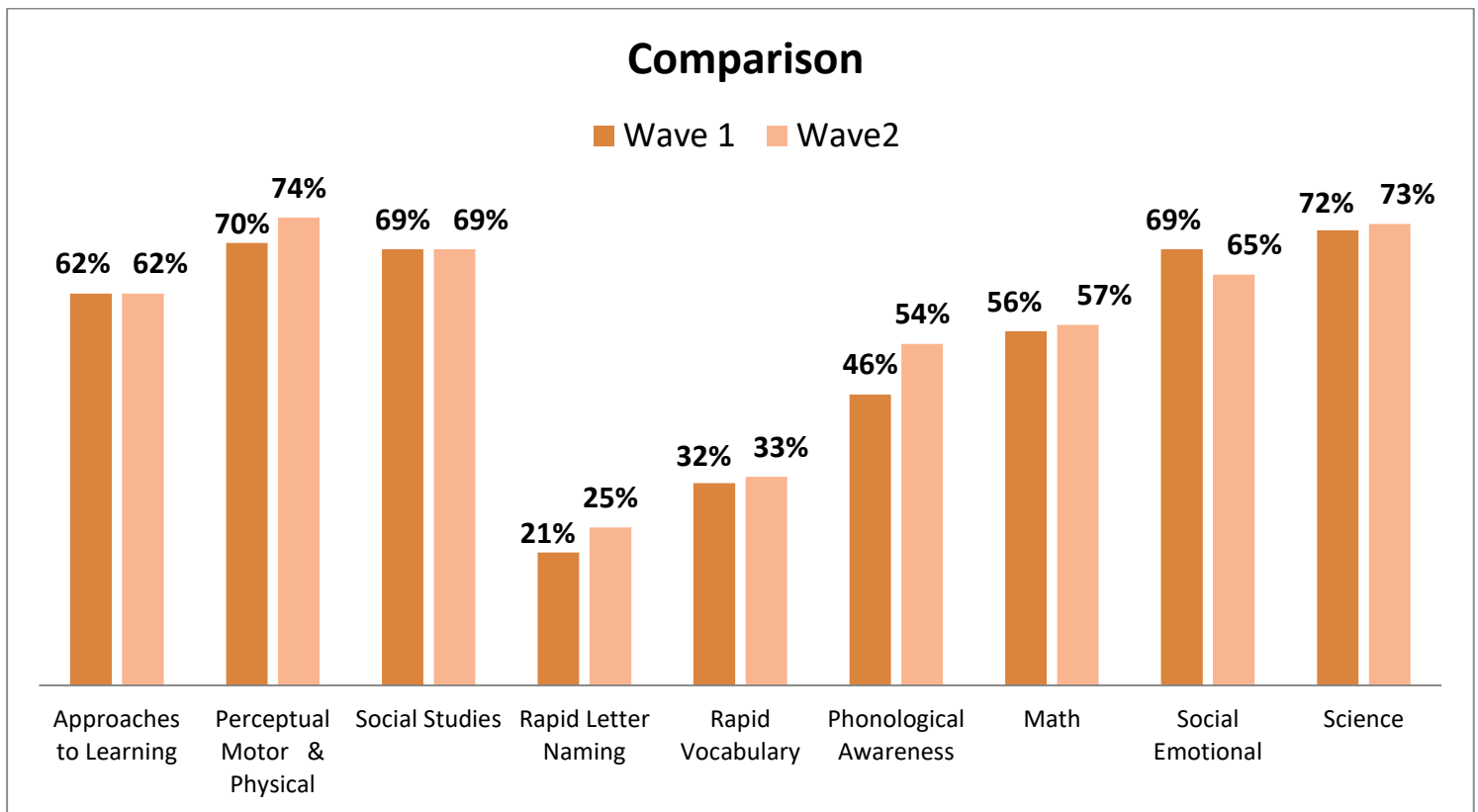
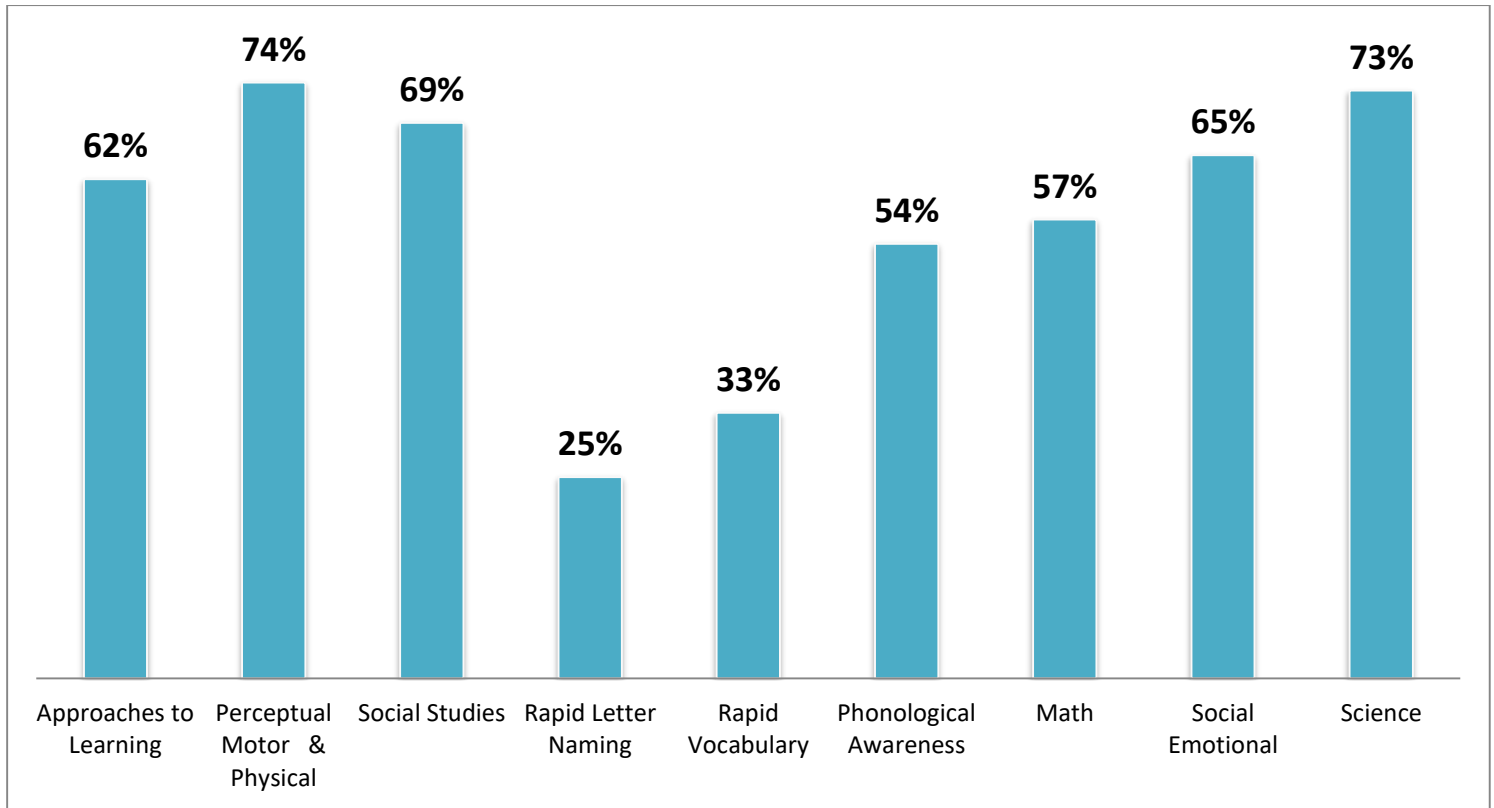
CSNT Head Start – CIRCLE Assessment

Wave 2 Dual Language learners 2021-2022



CSNT Head Start – CIRCLE Assessment

Wave 2 Disability 2021-2022



CSNT Head Start – CIRCLE Assessment

Wave 2 Race Comparison Data 2021-2022

	White	Black / African American	Other	2 or More Races
Approaches to Learning	71%	64%	75%	65%
Perceptual Motor/Physical	84%	78%	86%	81%
Social Studies	67%	69%	78%	66%
Rapid Letter Naming	25%	25%	24%	29%
Rapid Vocabulary	38%	38%	35%	36%
Phonological Awareness	59%	58%	55%	55%
Math	67%	64%	71%	63%
Social Emotional	75%	70%	79%	71%
Science	79%	74%	79%	72%
Total Students Tested	128	229	34	38

Percentage represents total number of correct responses for each domain.