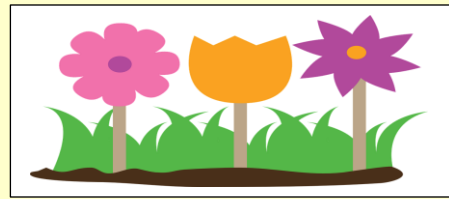


# CSNT Head Start Director's Report PY04/FY23

## March Report/February Data How Are We Doing?



### HEAD START Attendance - February 2023

- ✓ **465** Actual Enrollment (Under/Over 0 Student(s)) – Funded **465**
- ✓ **89%** Disability Students – **10%** Target
- ✓ **88%** Average Daily Attendance



### HEAD START NFS/Indirect Costs/Admin Expenses Rate

- ✓ **\$389,424** NFS Collected - **\$1,018,201** NFS Needed
- ✓ **\$0** Indirect Costs Collected
- ✓ **5%** Admin Expense Rate



### HEAD START CACFP Meals/Reimbursements

- ✓ **\$12,774** Reimbursed This Month - **\$37,757** Reimbursed This Year
- ✓ **19** days of Service – **4,884** Meals Served

## **ATTITUDE IS EVERYTHING**



### HEAD START Quality Assurance

- ✓ **192** Files Reviewed/**58** Classrooms Observed
- ✓ **10** Incomes Verified/**11** Interviews/**49** Community Contacts
- ✓ **Self-Assessment** – **4** Findings/**0** Corrections/**4** Remaining
- ✓ **Annual Detailed Monitoring** – **7** Findings/**2** Corrections/**5** Remaining

### ANNOUNCEMENTS:

Federal Review Final Letter Received - One Concern/No Findings  
Completing Final Assessments/Gathering Data for End-Of-Year Information

# CSNT Head Start Monthly Report

Program Year 04 2023 06CH011282/04

2023

Data Month **February** Report Month **March**

CSNT HS Report  
Revised 1/19/22

## Head Start Attendance/Enrollment

Report Month	December	January	February	March	April	May	June	July	August	September	October	November
Funded Enrollment HS	463	466	465									
Over/Under Enrollment HS	-2	1	0									
% with Special Needs	7%	8%	8%									
ADA Funded Enrolled* (465)	85%	89%	89%									
Enrollment (acutal students)	88%	90%	89%									
Present/ Absent	397/66	415/51	414/51									
* If below 85% (Why) -	NA	NA	NA									

## Non-Federal Share

Head Start	\$1,018,201	\$628,777	\$389,424	62% Needed	Grant Total	36.68% Received	\$ 395,727				
December	January	February	March	April	May	June	July	August	September	October	November
\$ 389,424	\$ 124,968	\$ 136,862	\$ 127,595								

## Indirect Cost Pool Expenditures (including % Admin)

ICP	\$ 403,242	\$ 403,242	Grant Total	\$ 427,030	Expended	\$ -						
*Grant should not be above 15%	December	January	February	March	April	May	June	July	August	September	October	November
HS Total 5%	\$ -	\$ -	\$ -	\$ -	\$ -	\$ -	\$ -	\$ -	\$ -	\$ -	\$ -	\$ -
\$ -	\$ -	\$ -	\$ -	\$ -	\$ -	\$ -	\$ -	\$ -	\$ -	\$ -	\$ -	\$ -

## Meals/Reimbursements

\$ 35,757	December	January	February	March	April	May	June	July	August	September	October	November
# of service days	14	19	19									
# of meals served	3,436	5,369	4,884									
CACFP Reimbursement	\$ 8,978	\$ 14,006	\$ 12,774									

## Program Monitoring

	December	January	February	March	April	May	June	July	August	September	October	November
# Child Files Reviewed	131	164	192									
# Classrooms Observed	53	60	58									
Incomes Verified	10	15	10									
# Parents Interviewed	6	0	0									
# of Staff interviewed	7	24	11									
# Bus Routes Observed	0	NA	NA									
# Staff Files Reviewed	0	0	0									
# Community Contacts	60	55	49									
# of Findings	8	104	51									

## Annual Self-Assessment Findings

Date: **Week of 3/3/2022** Completed **5/26/2022**

	December	January	February	March	April	May	June	July	August	September	October	November
# of findings	4	4	4									
# findings corrected	4	4	4									
# findings remaining	0	0	0									

## Annual Detailed Monitoring Findings

Week of **1/26/2023** Completed **NA**

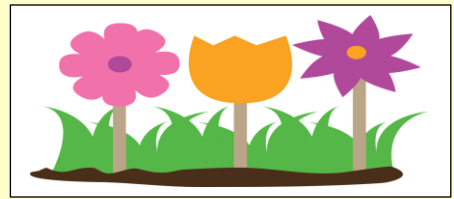
	December	January	February	March	April	May	June	July	August	September	October	November
# of Areas w/ findings	7	7	7									
# of Areas corrected	7	0	2									
# of Areas remaining	0	7	5									

## Program Updates

Gathering Data for Reports - End of Year Information  
Received Final Letter for Federal Review - One Area of Concern  
Completing Final Assessments

# CSNT Early Head Start Director's Report PY04/FY23

## March Report/February Data How Are We Doing?



### HEAD START Attendance - February 2023

- ✓ **16** Actual Enrollment (Under/Over 0 Student(s)) – Funded **16**
- ✓ **13%** Disability Students – **10%** Target
- ✓ **78%** Average Daily Attendance (Why? *Stomach Virus*)



### HEAD START NFS/Indirect Costs/Admin Expenses Rate

- ✓ **\$6,303** NFS Collected - **\$54,482** NFS Needed
- ✓ **\$0** Indirect Costs Collected
- ✓ **0%** Admin Expense Rate



### HEAD START CACFP Meals/Reimbursements

- ✓ **\$1,327** Reimbursed This Month - **\$4,409** Reimbursed This Year
- ✓ **14** days of Service – **512** Meals Served

## **ATTITUDE IS EVERYTHING**



### HEAD START Quality Assurance

- ✓ **2** Files Reviewed/**6** Classrooms Observed
- ✓ **0** Incomes Verified/**0** Interviews/**5** Community Contacts
- ✓ **Self-Assessment** – **4** Findings/**0** Corrections/**4** Remaining
- ✓ **Annual Detailed Monitoring** – **7** Findings/**2** Corrections/**5** Remaining

### ANNOUNCEMENTS:

Federal Review Final Letter Received - One Concern/No Findings  
Completing Final Assessments/Gathering Data for End-Of-Year Information

# CSNT Early Head Start Monthly Report

Program Year 04 2023 06CH011282/04

2023

Data Month **February** Report Month **March**

CSNT Early HS Report  
Revised 1/19/22

## Early Head Start Attendance/Enrollment

Report Month	December	January	February	March	April	May	June	July	August	September	October	November
Funded Enrollment EHS	16	16	17									
Over/Under Enrollment EHS	0	0	1									
% with Special Needs	12.50%	12.50%	12.50%									
ADA Funded Enrolled* (16)	77%	84%	78%									
Enrollment (acutal students)	77%	84%	78%									
Present/ Absent	14/2	13/3	13/3									
* If below 85% (Why) -	Cough/Cold	Virus Type Symptoms	Stomach Type Virus									

Non-Federal Share	Early HS	\$60,785	\$54,482	\$6,303	90% Needed	Grant Total	36.68% Received	\$395,727				
	December	January	February	March	April	May	June	July	August	September	October	November
\$	6,303	\$ 2,152	\$ 2,074	\$ 2,077								

Indirect Cost Pool Expenditures (including % Admin)	ICP	\$ 23,788	\$ 23,788	Grant Total	\$ 427,030	Expended	\$ -					
*Grant hould not be above 15%	December	January	February	March	April	May	June	July	August	September	October	November
EHS Total 0%	\$ -	\$ -	\$ -	\$ -	\$ -	\$ -	\$ -	\$ -	\$ -	\$ -	\$ -	\$ -
\$	-	\$ -	\$ -	\$ -	\$ -	\$ -	\$ -	\$ -	\$ -	\$ -	\$ -	\$ -

## Meals/Reimbursements

\$	4,409	December	January	February	March	April	May	June	July	August	September	October	November
# of service days	14	19	14										
# of meals served	490	697	512										
CACFP Reimbursement	\$ 1,275	\$ 1,806	\$ 1,327										

## Program Monitoring

	December	January	February	March	April	May	June	July	August	September	October	November
# Child Files Reviewed	6	7	2									
# Classrooms Observed	7	8	6									
Incomes Verified	0	2	0									
# Parents Interviewed	1	0	0									
# of Staff interviewed	0	0	0									
# Bus Routes Observed	NA	NA	NA	NA	NA	NA	NA	NA	NA	NA	NA	NA
# Staff Files Reviewed	0	0	0									
# Community Contacts	6	5	5									
# of Findings	1	1	0									

## Annual Self-Assessment Findings

Date: **Week of 3/3/2022** Completed **5/26/2022**

	December	January	February	March	April	May	June	July	August	September	October	November
# of findings	4	4	4									
# findings corrected	4	4	4									
# findings remaining	0	0	0									

## Annual Detailed Monitoring Findings

Week of **1/26/2023** Completed **NA**

	December	January	February	March	April	May	June	July	August	September	October	November
# of findings	7	7	7									
# findings corrected	7	0	2									
# findings remaining	0	7	5									

## Program Updates

Gathering Data for Reports - End of Year Information  
Received Final Letter for Federal Review - One Area of Concern  
Completing Final Assessments



# Office of Head Start - Head Start Services Snapshot

Community Services Of Northeast Texas, Inc. (2022-2023)

Date

3/3/2023

## Funded Enrollment

Number of enrollment slots the program is funded to serve.

	<i># of funded enrollment slots</i>	<i>% of funded enrollment slots</i>
Total Funded Enrollment	465	100.00%

## Funded Enrollment by Program Option

	<i># of funded enrollment slots</i>	<i>% of funded enrollment slots</i>
Center-based	465	100.00%
Home-based	0	0%
Family Child Care	0	0%
Locally Designed	0	0%

## Detail - Center-based Funded Enrollment

	<i># of center-based funded enrollment slots</i>	<i>% of center-based funded enrollment slots</i>
Number of slots equal to or greater than 1,020 annual hours for Head Start preschool children or 1,380 annual hours for Early Head Start infants and toddlers	466	100.22%
Of these, the number that are available for the full-working-day and full-calendar-year	0	
Number of slots with fewer than 1,020 annual hours for Head Start preschool children or 1,380 annual hours for Early Head Start infants and toddlers	0	0%
Of these, the number that are available for 3.5 hours per day for 128 days	0	
Of these, the number that are available for a full working day	0	

## Total Cummulative Enrollment

	<i># of participants</i>	<i>% of participants over Funded Enrollment</i>
Total Cumulative Enrollment	517	11.18%

## Participants by Age

	<i># of participants</i>	<i>% of participants</i>
1 Year Old	0	0.00%
2 Years Old	6	1.16%
3 Years Old	244	47.20%
4 Years Old	267	51.64%
5 Years Old	0	0.00%

## Homelessness Services

	<i># of children</i>	<i>% of children</i>
Total number of children experiencing homelessness that were served during the enrollment year	37	7.16%

## Foster Care

	# of children	% of children
Total number of enrolled children who were in foster care at any point in the program year	24	4.64%

## Prior Enrollment of Children

	# of children	% of children
The second year	130	25.15%
Three or more years	10	1.93%

## Ethnicity And Race

	# of Hispanic or Latino Origin participants	% of Hispanic or Latino Origin participants	# of Non-Hispanic or Non-Latino Origin participants	% of Non-Hispanic or Non-Latino Origin participants
American Indian or Alaska Native	0	0.00%	1	0.19%
Asian	0	0.00%	5	0.97%
Black or African American	9	1.74%	255	49.32%
Native Hawaiian or Pacific Islander	0	0.00%	0	0.00%
White	25	4.84%	147	28.43%
Biracial or Multi-Racial	5	0.97%	36	6.96%
Other Race	34	6.58%	0	0.00%
Unspecified Race	0	0.00%	0	0.00%

## Primary Language of Parents at Home

	# of children	% of children
English	488	94.39%
Of these, the number of children acquiring/learning another language in addition to English	13	
Spanish	26	5.03%
Central American, South American, or Mexican Languages	0	0.00%
Caribbean Languages	0	0.00%
Middle Eastern or South Asian Languages	0	0.00%
East Asian Languages	3	0.58%
Native North American or Alaska Native Languages	0	0.00%
Pacific Island Languages	0	0.00%
European or Slavic Languages	0	0.00%
African Languages	0	0.00%
American Sign Language	0	0.00%
Other Languages	0	0.00%
Unspecified Languages	0	0.00%

## Health Services

Services to All Children at Beginning of Enrollment Year Compared to End of Enrollment Year (based on Cumulative Enrollment)	# at Beginning of Enrollment Year	% at Beginning of Enrollment Year	# at End of Enrollment Year	% at End of Enrollment Year
Children with health insurance	481	93.04%	358	69.25%
Children with accessible health care	466	90.14%	338	65.38%
Children with up-to-date immunizations or all possible immunizations to date, or exempt	468	90.52%	443	85.69%
Children with accessible dental care	451	87.23%	329	63.64%

## Disabilities Services

	<i># of children</i>	<i>% of children</i>
Children with an Individualized Education Program (IEP), indicating they were determined eligible to receive special education and related services	37	7.96%

## Family Services

	<i># of families</i>	<i>% of families</i>
Total Number of Families	489	100.00%

	<i># of families</i>	<i>% of families</i>
Families Who Received at Least One Family Service	380	77.71%

## Specific Services

	<i># of families</i>	<i>% of families</i>
Emergency or Crisis Intervention	19	3.89%
Housing Assistance	6	1.23%
Asset Building Services	143	29.24%
Mental Health Services	8	1.64%
Substance Misuse Prevention	2	0.41%
Substance Misuse Treatment	6	1.23%
English as a Second Language (ESL) Training	14	2.86%
Assistance in enrolling into an education or job training program	65	13.29%
Research-based parenting curriculum	262	53.58%
Involvement in discussing their child's screening and assessment results and their child's progress	296	60.53%
Supporting transitions between programs	225	46.01%
Education on preventive medical and oral health	353	72.19%
Education on health and developmental consequences of tobacco product use	162	33.13%
Education on nutrition	362	74.03%
Education on postpartum care	8	1.64%
Education on relationship/marriage	10	2.04%
Assistance to families of incarcerated individuals	1	0.20%



# Office of Head Start - Early Head Start Services Snapshot

Community Services Of Northeast Texas, Inc. (2022-2023)

Date

3/3/2023

## Funded Enrollment

Number of enrollment slots the program is funded to serve.

	<i># of funded enrollment slots</i>	<i>% of funded enrollment slots</i>
Total Funded Enrollment	16	100.00%

## Funded Enrollment by Program Option

	<i># of funded enrollment slots</i>	<i>% of funded enrollment slots</i>
Center-based	16	100.00%
Home-based	0	0%
Family Child Care	0	0%
Locally Designed	0	0%

## Detail - Center-based Funded Enrollment

	<i># of center-based funded enrollment slots</i>	<i>% of center-based funded enrollment slots</i>
Number of slots equal to or greater than 1,020 annual hours for Head Start preschool children or 1,380 annual hours for Early Head Start infants and toddlers	16	100.00%
Of these, the number that are available for the full-working-day and full-calendar-year	0	
Number of slots with fewer than 1,020 annual hours for Head Start preschool children or 1,380 annual hours for Early Head Start infants and toddlers	0	0%
Of these, the number that are available for 3.5 hours per day for 128 days	0	
Of these, the number that are available for a full working day	0	

## Total Cumulative Enrollment

	<i># of participants</i>	<i>% of participants</i>
Total Cumulative Enrollment	17	106.25%

## Participants by Age

	<i># of participants</i>	<i>% of participants</i>
Under 1 Year Old	1	5.88%
1 Year Old	7	41.18%
2 Years Old	9	52.94%
3 Years Old	0	0.00%
Pregnant Women	0	0.00%

## Homelessness Services

	<i># of children</i>	<i>% of children</i>
Total number of children experiencing homelessness that were served during the enrollment year	2	11.76%



## Foster Care

	# of children	% of children
Total number of enrolled children who were in foster care at any point in the program year	1	5.88%

## Prior Enrollment of Children

	# of children	% of children
The second year	4	23.53%
Three or more years	1	5.88%

## Ethnicity And Race

	# of Hispanic or Latino Origin participants	% of Hispanic or Latino Origin participants	# of Non-Hispanic or Non-Latino Origin participants	% of Non-Hispanic or Non-Latino Origin participants
American Indian or Alaska Native	0	0.00%	0	0.00%
Asian	0	0.00%	1	5.88%
Black or African American	0	0.00%	8	47.06%
Native Hawaiian or Pacific Islander	0	0.00%	0	0.00%
White	0	0.00%	4	23.53%
Biracial or Multi-Racial	1	5.88%	1	5.88%
Other Race	2	11.76%	0	0.00%
Unspecified Race	0	0.00%	0	0.00%

## Primary Language of Parents at Home

	# of children	% of children
English	15	88.24%
Of these, the number of children acquiring/learning another language in addition to English	2	11.76%
Spanish	2	11.76%
Central American, South American, or Mexican Languages	0	0.00%
Caribbean Languages	0	0.00%
Middle Eastern or South Asian Languages	0	0.00%
East Asian Languages	0	0.00%
Native North American or Alaska Native Languages	0	0.00%
Pacific Island Languages	0	0.00%
European or Slavic Languages	0	0.00%
African Languages	0	0.00%
American Sign Language	0	0.00%
Other Languages	0	0.00%
Unspecified Languages	0	0.00%

## Health Services

<i>Services to All Children at Beginning of Enrollment Year Compared to End of Enrollment Year (based on Cumulative Enrollment)</i>	# at Beginning of Enrollment Year	% at Beginning of Enrollment Year	# at End of Enrollment Year	% at End of Enrollment Year
Children with health insurance	17	100.00%	17	100.00%
Children with accessible health care	16	94.12%	8	47.06%
Children with up-to-date immunizations or all possible immunizations to date, or exempt	16	94.12%	16	94.12%
Children with accessible dental care	16	94.12%	8	47.06%

## Disabilities Services

	<i># of children</i>	<i>% of children</i>
Children with an Individualized Family Service Plan (IFSP), indicating they were determined eligible to receive early intervention services	2	12.50%

## Family Services

	<i># of families</i>	<i>% of families</i>
Total Number of Families	15	88.24%

	<i># of families</i>	<i>% of families</i>
Families Who Received at Least One Family Service	15	100.00%

## Specific Services

	<i># of families</i>	<i>% of families</i>
Emergency or Crisis Intervention	0	0.00%
Housing Assistance	0	0.00%
Asset Building Services	0	0.00%
Mental Health Services	0	0.00%
Substance Misuse Prevention	0	0.00%
Substance Misuse Treatment	0	0.00%
English as a Second Language (ESL) Training	2	13.33%
Assistance in enrolling into an education or job training program	10	66.67%
Research-based parenting curriculum	15	100.00%
Involvement in discussing their child's screening and assessment results and their child's progress	12	80.00%
Supporting transitions between programs	9	60.00%
Education on preventive medical and oral health	15	100.00%
Education on health and developmental consequences of tobacco product use	3	20.00%
Education on nutrition	15	100.00%
Education on postpartum care	0	0.00%
Education on relationship/marriage	0	0.00%
Assistance to families of incarcerated individuals	0	0.00%